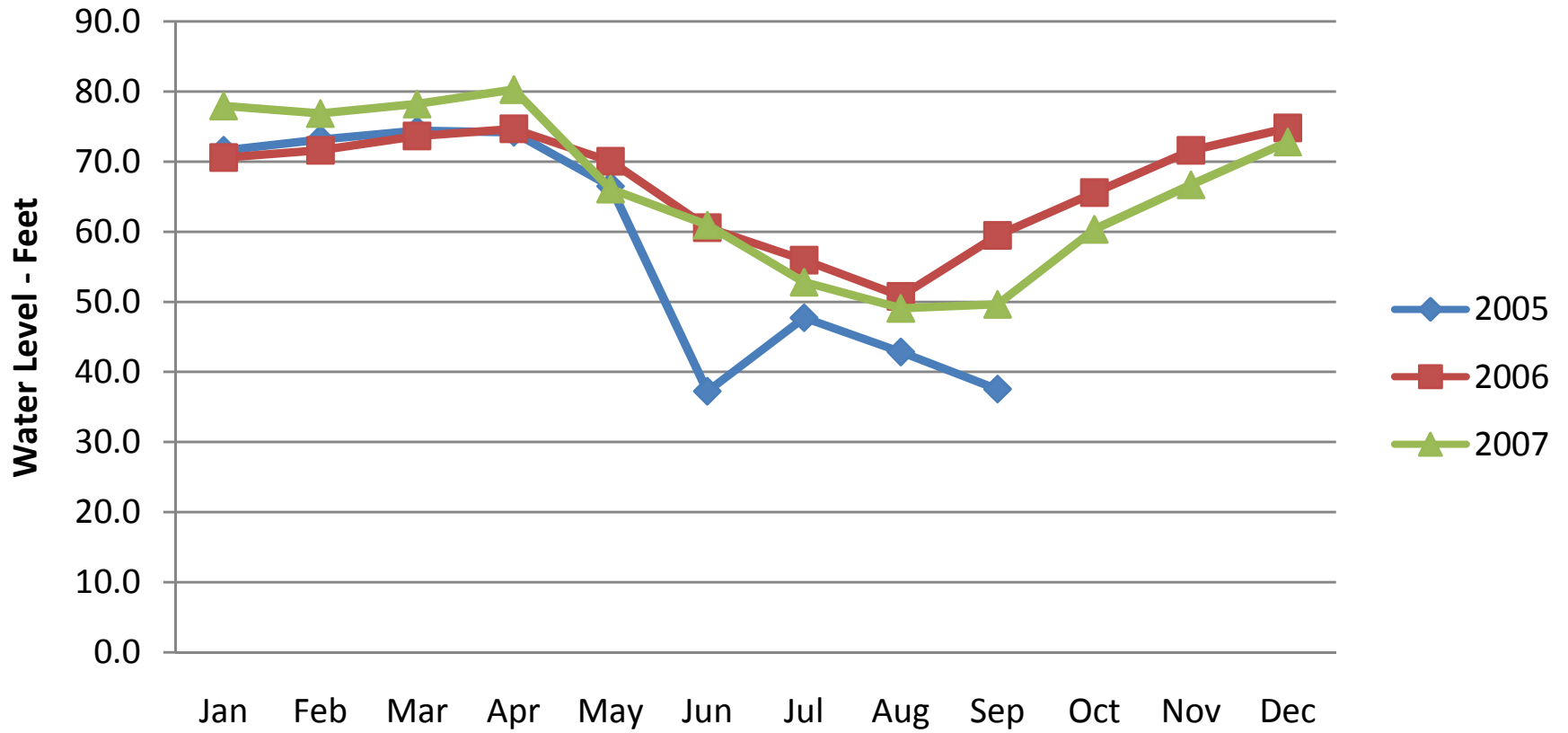


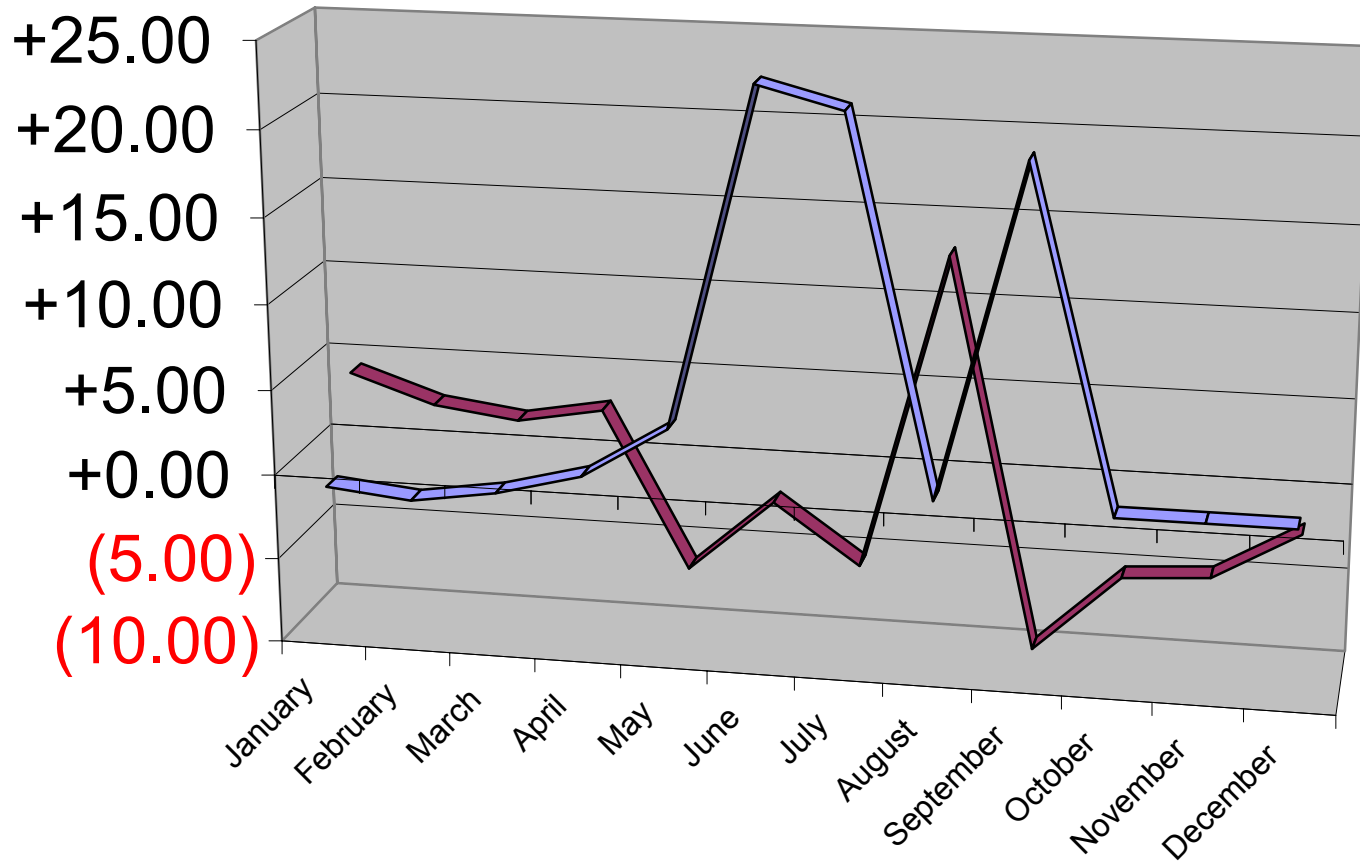
### 3 Year History of Average Water Levels by Month



Village of Riverwoods  
Monthly Well Water Depth Readings

		Jan	Feb	Mar	Apr	May	Jun	Jul	Aug	Sep	Oct	Nov	Dec
West Reservoir Well 1	2005	129.4	129	129.4	129.4	122.4	92.4	101.6	97	92.4	No Well Readings for Oct-Dec 2005		
West Reservoir Well 2	2005	129.4	129	129.4	129.4	122.4	92.4	99.33	97	90.1			
385 Thornmeadow	2005	50.8	53.6	55.4	53.1	41.6	7	23.1	16.2	11.6			
2920 Orange Brace	2005	48.5	51	50.8	50.8	41.6	11.6	25.4	13.9	13.9			
2715 Daiquiri	2005	60.1	61.8	62.4	62.4	50.8	7	30	23.1	18.5			
Village Hall	2005	50.8	53	53.1	55.4	46.2	18.5	30	27.7	18.5			
866 Hiawatha	2005	73.9	73.6	73.9	73.9	67	41.6	50.8	46.2	Not Read <sup>1</sup>			
1901 Strenger	2005	50.8	55.4	60.1	57.8	55.4	37	37	36.9	32.3			
		<b>71.6</b>	<b>73.2</b>	<b>74.4</b>	<b>74.2</b>	<b>66.5</b>	<b>37.2</b>	<b>47.7</b>	<b>42.9</b>	<b>37.6</b>			
West Reservoir Well 1	2006	129.4	129.4	131.7	131.7	120	117.8	113.2	101.6	101.6	117.8	124.7	129.4
West Reservoir Well 2	2006	129.4	129.4	131.7	131.7	131.7	117.8	113.2	101.6	101.6	117.8	124.7	129.4
385 Thornmeadow	2006	53.1	50.8	53.1	53.1	46.2	37	32.3	18.5	39.3	41.6	46.2	50.8
2920 Orange Brace	2006	46.2	46.2	50.8	50.8	46.2	37	32.3	27.7	39.3	41.6	48.5	46.2
2715 Daiquiri	2006	60.1	57.8	60.1	60.1	55.4	43.9	37	30	46.2	48.5	53.1	60.1
Village Hall	2006	50.8	50.8	53.1	55.4	50.8	41.6	37	32.3	41.6	46.2	53.1	50.8
866 Hiawatha	2006	69.3	71.6	73.9	76.2	73.9	62.4	57.8	53.1	60.1	62.7	69.3	73.9
1901 Strenger	2006	50.8	57.8	55.4	60.1	55.4	46.2	43.9	41.6	46.2	48.5	53.1	57.8
		<b>70.6</b>	<b>71.6</b>	<b>73.7</b>	<b>74.7</b>	<b>70.0</b>	<b>60.6</b>	<b>56.0</b>	<b>50.8</b>	<b>59.5</b>	<b>65.6</b>	<b>71.6</b>	<b>74.8</b>
West Reservoir Well 1	2007	131.6	130	131.6	129.4	101.6	113.2	87.5	97	85.5	115.5	115.5	127.1
West Reservoir Well 2	2007	131.6	130	131.6	131.7	124.7	113.2	99.3	101.6	99.3	115.5	120.1	127.1
385 Thornmeadow	2007	53.1	52.8	55.4	60.1	41.6	34.7	27.7	18.5	25.4	34.7	43.9	51
2920 Orange Brace	2007	53.1	51.1	52.2	55.4	46.2	37	34.7	32.3	27.7	32.3	48.5	39.3
2715 Daiquiri	2007	60.1	60	62.3	64.7	46.2	39.3	34.7	23.1	30	43.9	46.2	60.1
Village Hall	2007	57.8	57.2	58.8	62.4	50.8	41.6	37	32.3	32.3	39.3	46.2	46.2
866 Hiawatha	2007	73.9	73.8	73.8	73.9	69.3	62.4	57.8	50.8	55.4	60.1	64.7	71.6
1901 Strenger	2007	62.4	60.1	60.1	64.7	48.5	46.2	43.9	37	41.6	41.6	48.5	60.1
		<b>78.0</b>	<b>76.9</b>	<b>78.2</b>	<b>80.3</b>	<b>66.1</b>	<b>61.0</b>	<b>52.8</b>	<b>49.1</b>	<b>49.7</b>	<b>60.4</b>	<b>66.7</b>	<b>72.8</b>
		<b>Jan</b>	<b>Feb</b>	<b>Mar</b>	<b>Apr</b>	<b>May</b>	<b>Jun</b>	<b>Jul</b>	<b>Aug</b>	<b>Sep</b>	<b>Oct</b>	<b>Nov</b>	<b>Dec</b>
	2005	71.6	73.2	74.4	74.2	66.5	37.2	47.7	42.9	37.6	NA	NA	NA
	2006	70.6	71.6	73.7	74.7	70.0	60.6	56.0	50.8	59.5	65.6	71.6	74.8
	2007	78.0	76.9	78.2	80.3	66.1	61.0	52.8	49.1	49.7	60.4	66.7	72.8

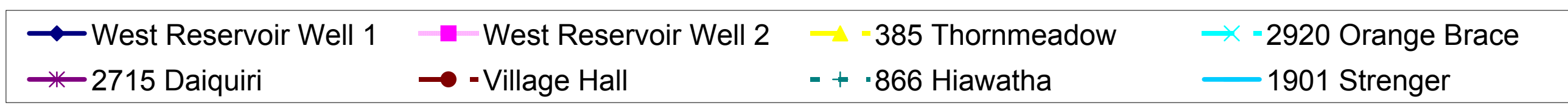
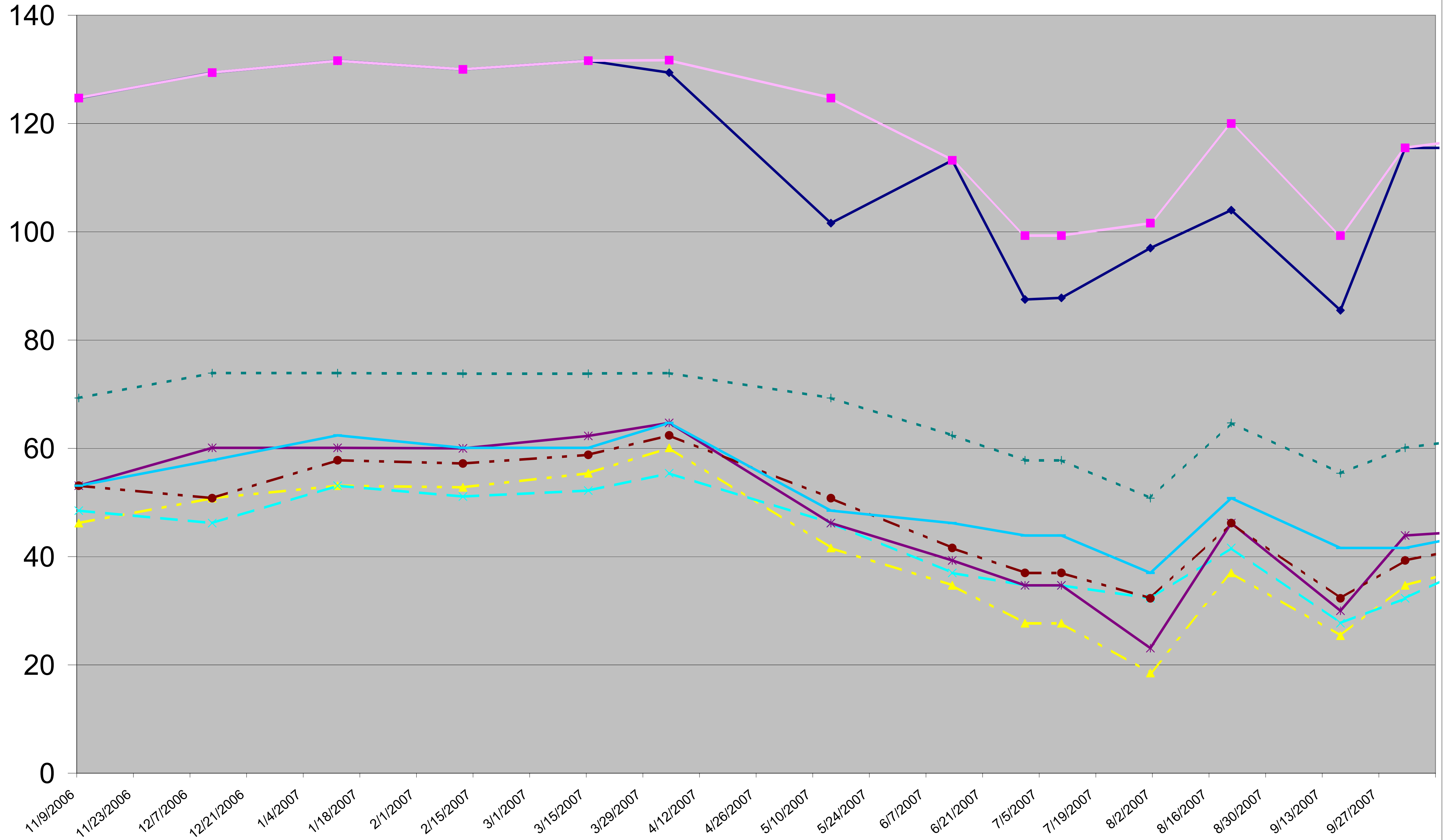
# Year over Year Change in Average Water Levels



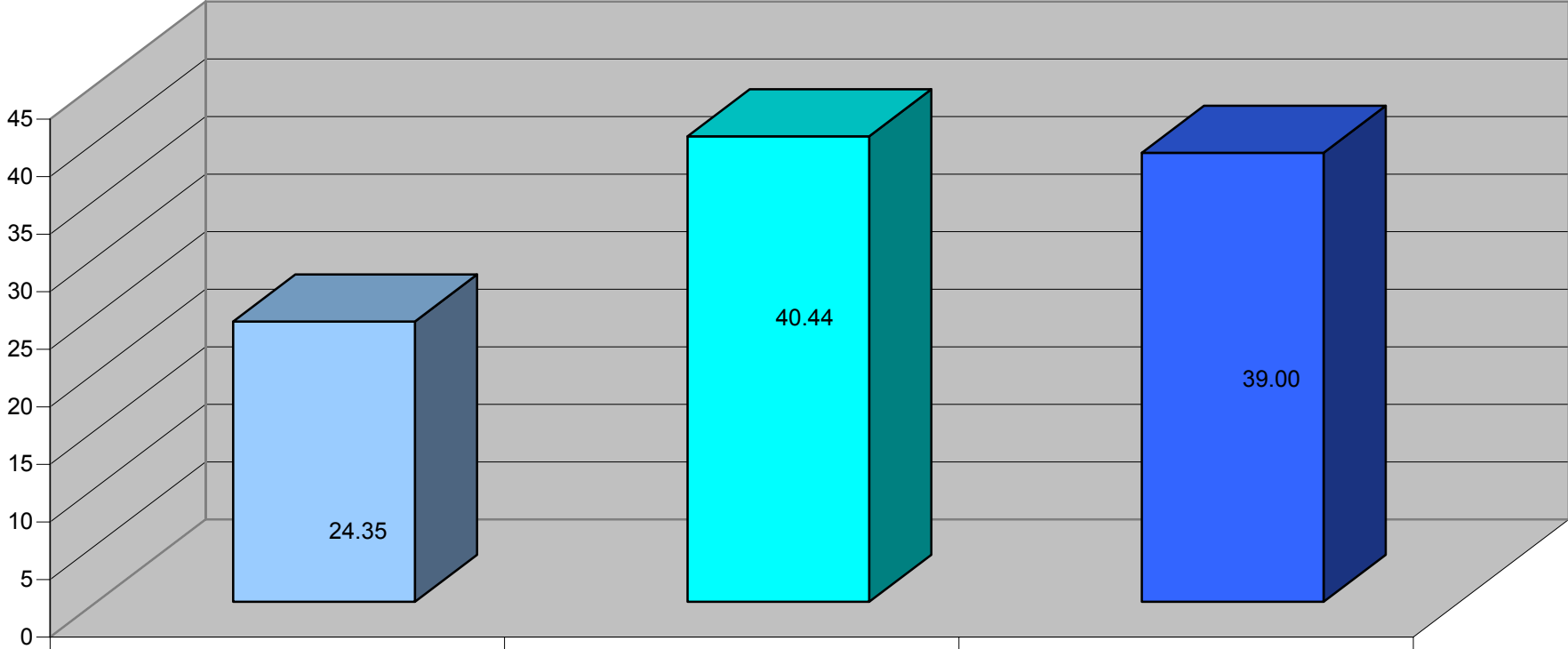
■ Average '06 v '05

■ Average '07 v '06

### Water Level Above Pump Set



**YTD Total Rainfall (Inches)**



2005

2006

2007

Source: Chicago Botanical Gardens